



**The Flow80s: ONE PLATFORM. TWO MODELS.**



Flow80-1 – 1 Bedroom



Flow80-2 – 2 Bedrooms

**“what if the most affordable housing also  
had the least impact on the planet?”**

- adapted from Tom Chi (At One Ventures) quote



**what if it also had no monthly electric bill?**

**what if it was also the lowest in maintenance costs?**

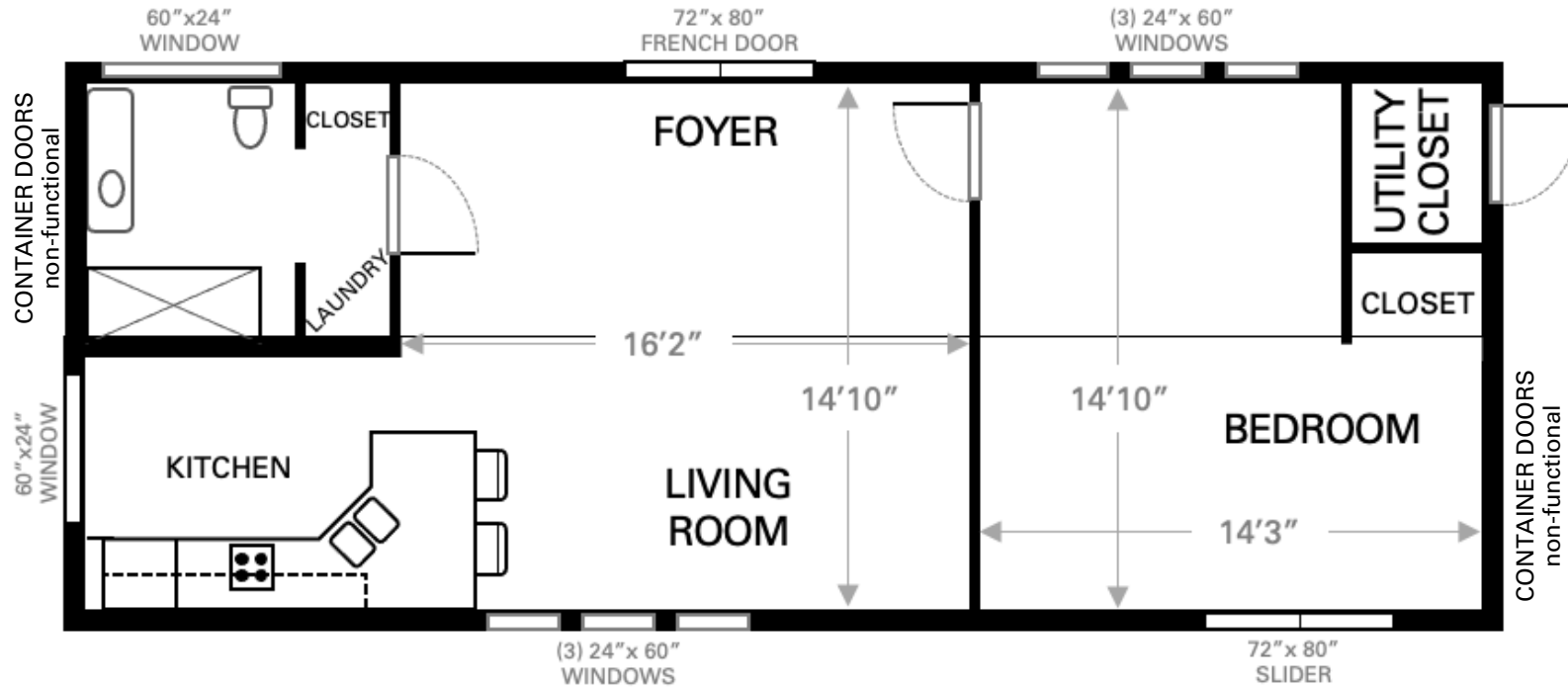
**what if it was also a smart house?**

**what if it was also storm resilient?**

***At ContainerSolutions, we believe the future of housing should be all the above.***

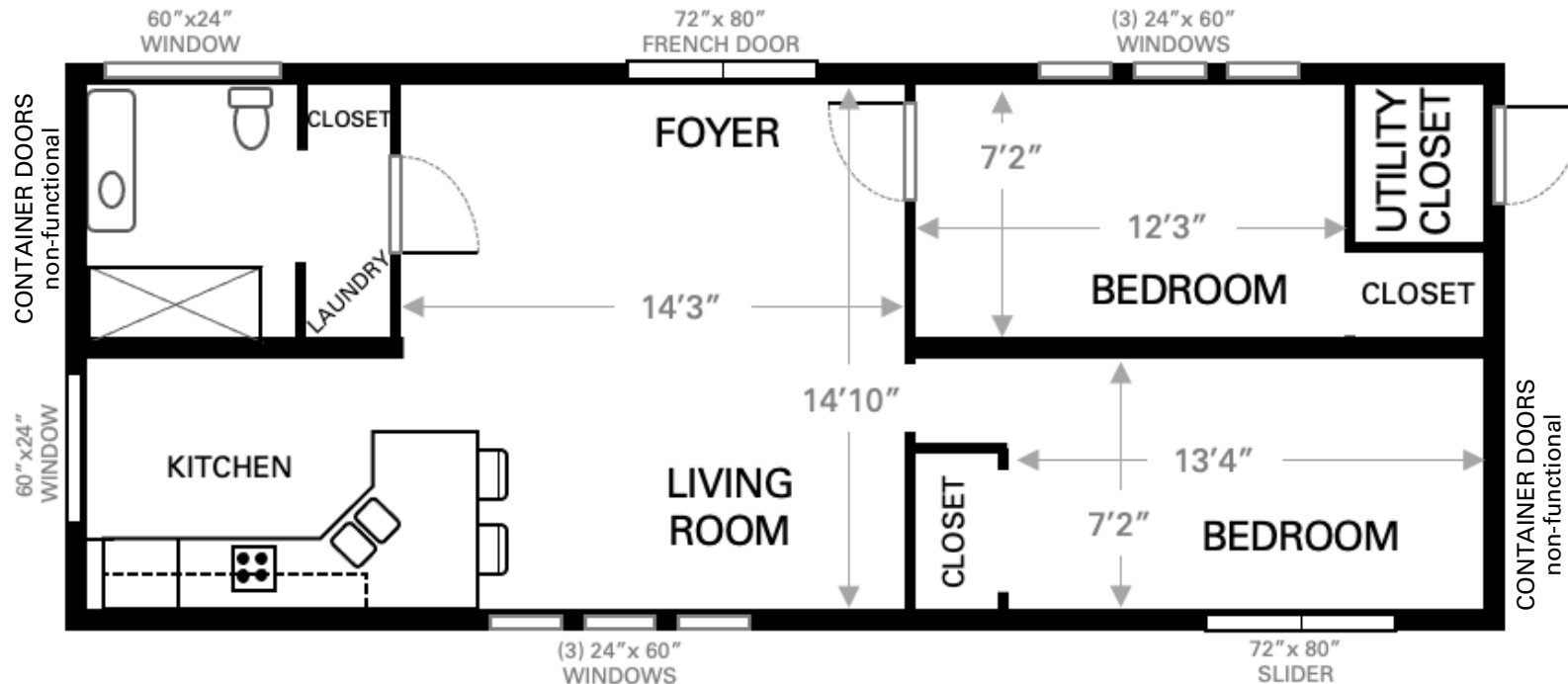
# Flow80

(2) 40' Containers



## Flow80-1 Floor Plan

- Two 40' Containers
- 1 bedroom, 1 bath



## Flow80-2 Floor Plan

- Two 40' Containers
- 2 bedrooms, 1 bath

# Inside the Flow80



An open and inviting living space.



Full bathroom w/ stacked laundry.

**Every detail has purpose.  
Premium finishes, modern fixtures, and a  
minimalist flow create a space that feels open,  
calm, and effortless.**

## Inside the Flow80



**One or Two Bedroom configurations.**



## THE ESSENTIALS

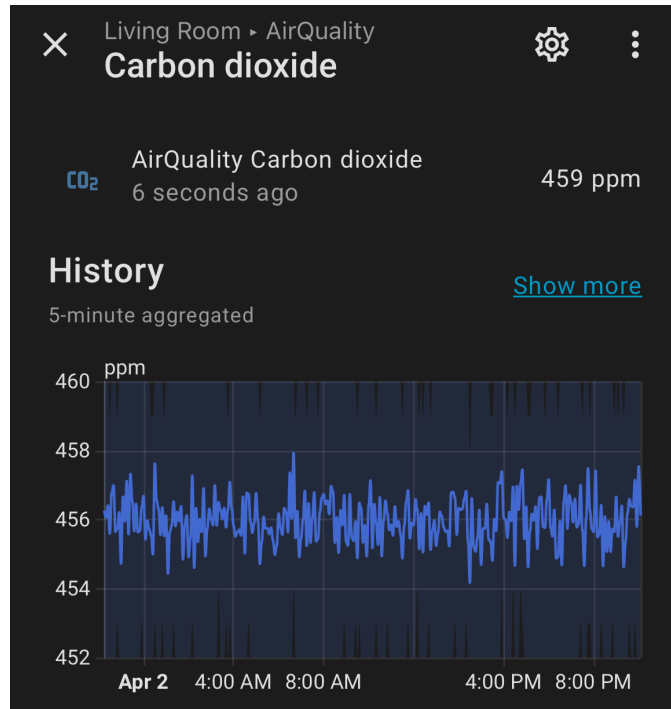
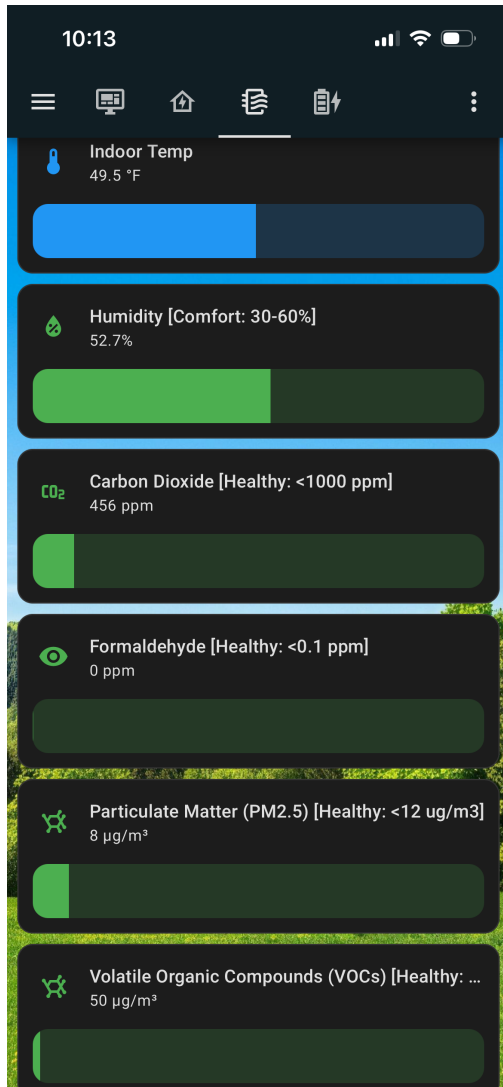
3-Layer Corrosion Protection • Four 24"x60" windows  
Dual 72"x80" French doors • Shiplap walls  
200A electrical panel • Luxury vinyl flooring throughout  
Closed-cell spray-foam insulation (R-60 ceiling, R-21 walls, R-30 floor)



# What Comes Standard



# What Comes Standard



- Advanced Indoor Air Monitoring
- VOCs
  - CO<sub>2</sub>
  - PM2.5
  - Formaldehyde
  - Humidity
  - Temperature



Energy Recovery Ventilation (ERV) System



Metal Studs to Eliminate Mold

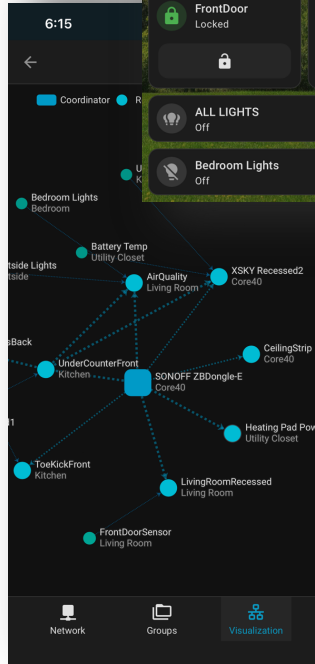
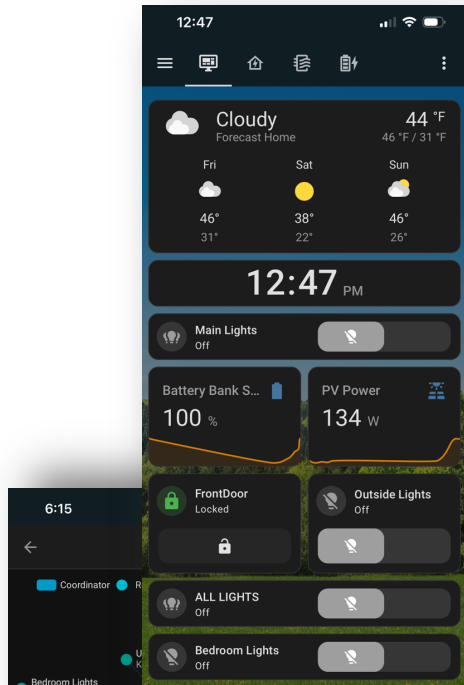
**HEALTHIER AIR TO BREATHE**  
(shouldn't be an upgrade)

# What Comes Standard



## A SMARTER WAY TO LIVE

- Local-first smart home hub
- Biometric door access
- Integrated motion sensors
- Advanced Indoor Air Monitoring
- Recessed lighting
- Ambient strip lighting
- AI Security Camera Monitoring

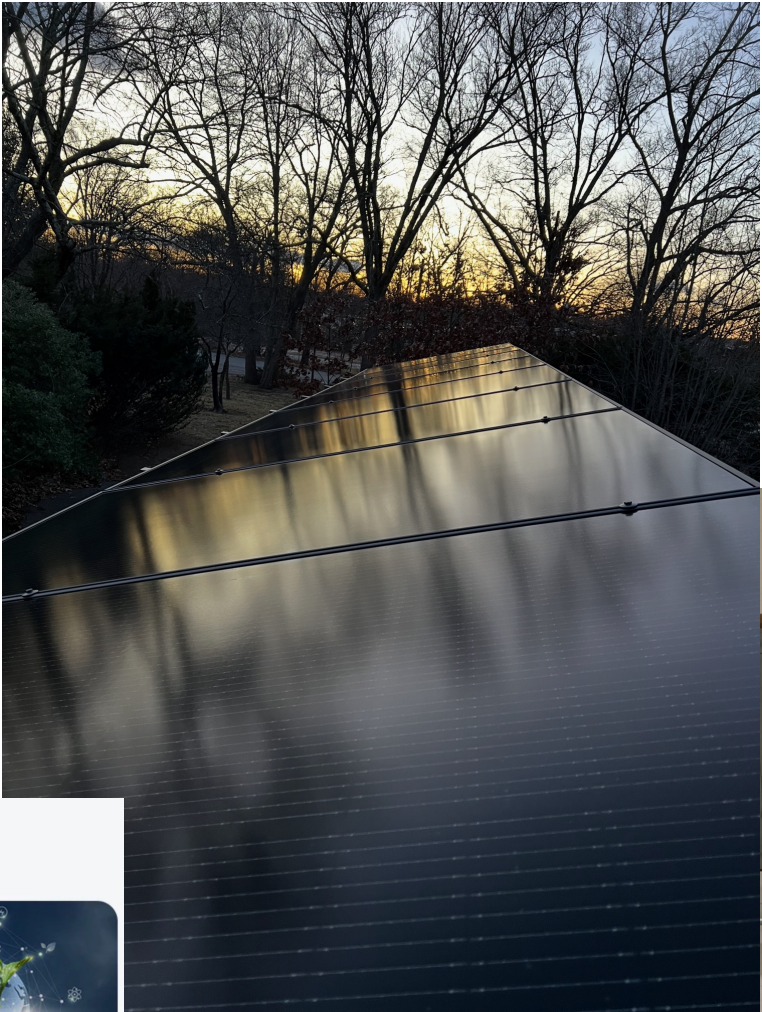


# What Comes Standard

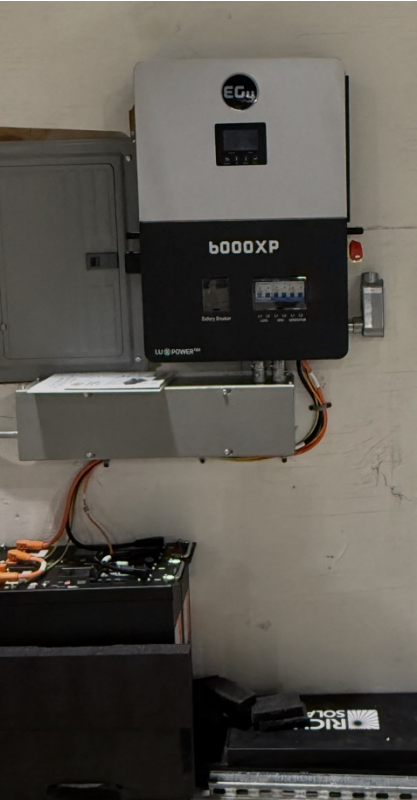


## COMPLETE OFF-GRID SOLAR

3.28kW 8-panel array  
20.48kWh LiFePO<sub>4</sub> battery storage  
6,000W pure-sine



Designed for a home that can power itself from day one.



## Dependable Power You Can Trust



### 10-Year Warranty

Enjoy peace of mind with our 10-year warranty, reflecting our commitment to superior quality and your secure investment.



### Zero Maintenance

No acid or water required, no trickle charging needed, and no mess involved. Enjoy hassle-free operation with zero maintenance.



### Under 5% Self-Discharge Rate

The ALPHA 5 PRO maintains its charge longer, reducing the need for frequent recharging and ensuring reliable power when you need it.



### Eco-Friendly Design

The ALPHA 5 PRO uses non-toxic materials, supports renewable energy, and has a long lifespan, making it an environmentally friendly choice.



# What Comes Standard



## APPLIANCES INCLUDED

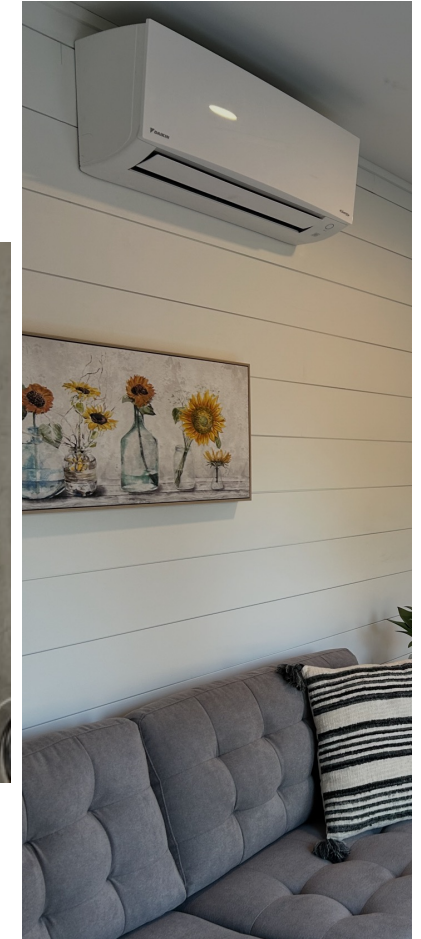
Stove/Oven combo • Full-size refrigerator (17.2 cu ft)  
1.8 cu ft microwave • Dishwasher



## UTILITIES ENGINEERED FOR COMFORT

12,000 BTU mini-split heat pump  
W/ 2 Head Units

High-efficiency tankless propane  
hot water





**Built for Tomorrow.  
Delivered NOW.**

**Fast Deployment**

Move-in ready within weeks, not months.

**Smart From the Start**

Automations, sensors, and secure controls built directly into the home.

**Healthier Living**

Clean, conditioned air. Mold-resistant materials. A home designed to breathe.

**Sustainable by Design**

High-efficiency systems and off-grid capability reduce both cost and footprint.

